

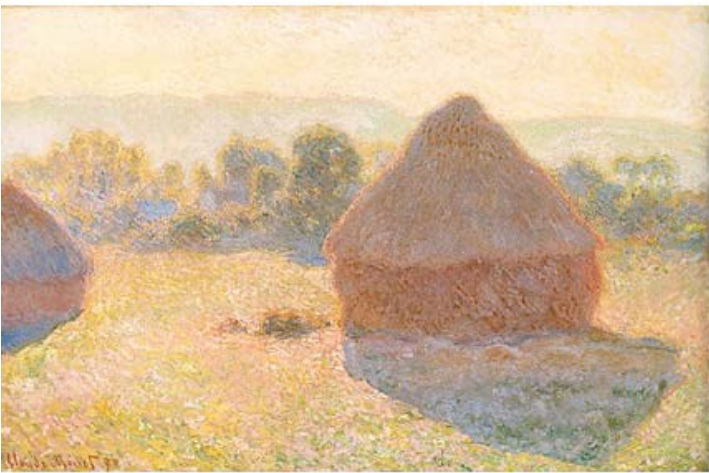
Changes in Light Artist Research.



1



2



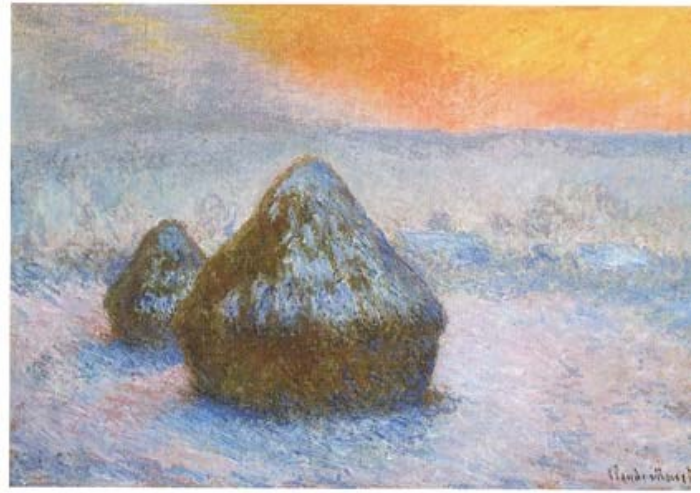
3



4



5



6

Which Monet haystack painting is "At end of summer, morning effect?"

Monet described as "White frost effect?"

Monet painted one of these at "Midday."

"On a foggy morning?"

"Thaw, sunset."

"Sunset, snow effect?"

Changes in Light Artist Research.

#1 is "At end of summer, morning effect."

#2 is "On a foggy morning."

#3 is "Midday."

#4 is "White frost effect."

#5 is "Thaw, sunset."

#6 is "Sunset, snow effect."



Poplars

Rouen Cathedral



The Houses of Parliament



Changes in Light Artist Research.

Hokusia Thirty-six views of mount fuji.



Changes in Light Artist Research.



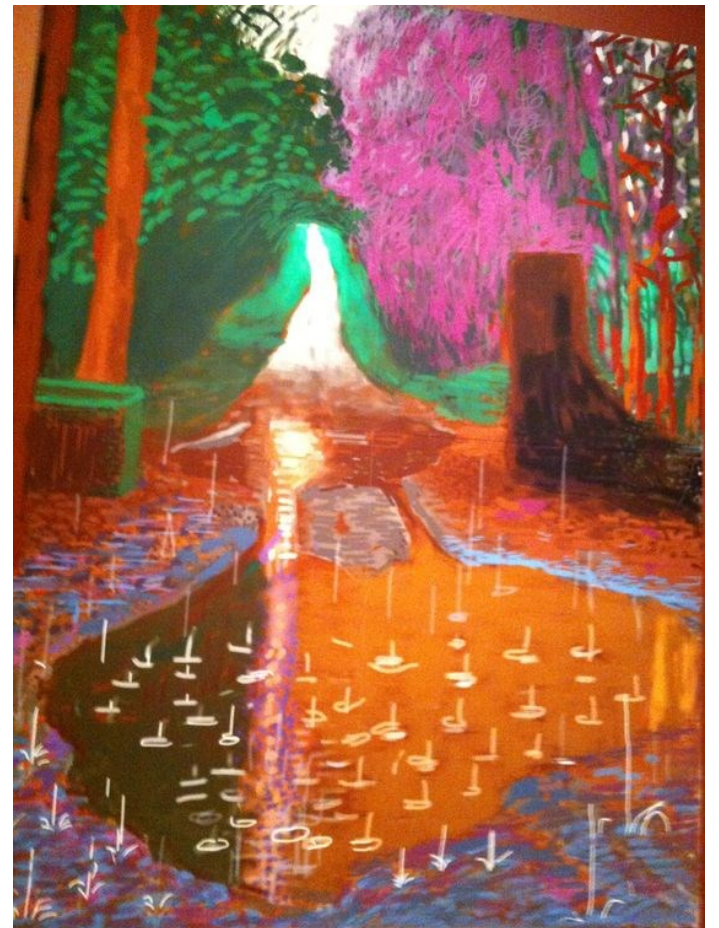
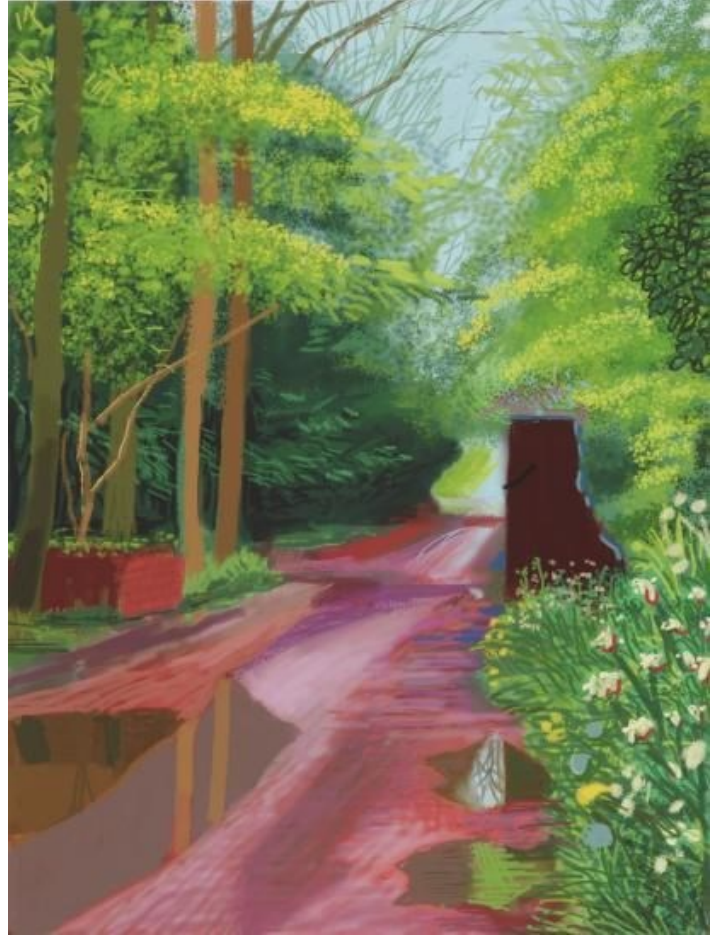
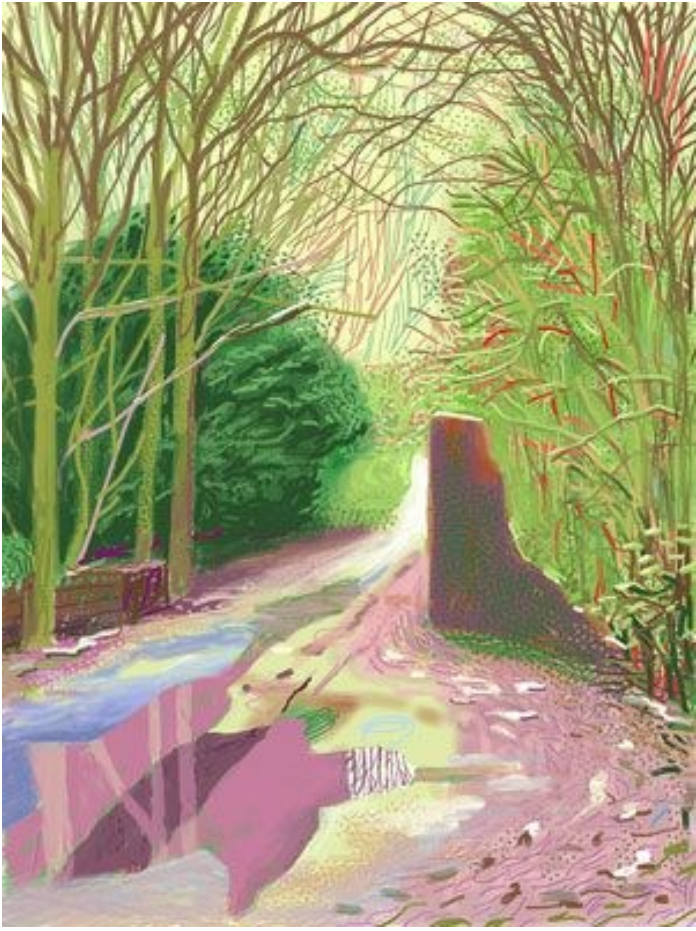
Alfred Sisley, "Church at Moret-sur-Loing" series of 1893-4.



Boulevard Montmartre
by Night - 1897 Camille
Pissarro



Changes in Light Artist Research.



Changes in Light Artist Research.



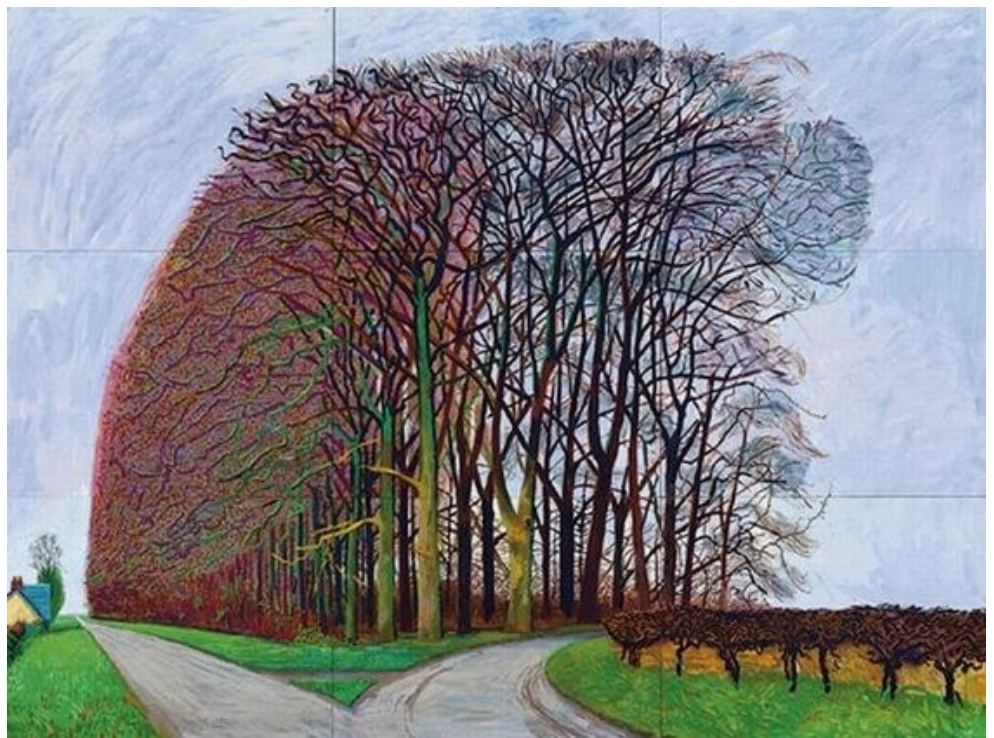
David Hockney – Woldgate Woods, 30 March – 21 April 2006. Oil On 6 Canvases (36 X 48 inches each) 72 x 144 inches overall

26th, 27th + 30th July 2006.



21, 23 & 29 November 2006.

David Hockney –
Bigger Trees Nearer
Warter, Winter 2008.
Oil on nine canvases
(36 x 48 in. each) 108
x 144 in. overall.



Changes in Light Artist Research.



Brighton Beach, with the Chain Pier in the Distance, from the West
Joseph Mallord William Turner

Jeremy Mann, SF Night in Red, Oil



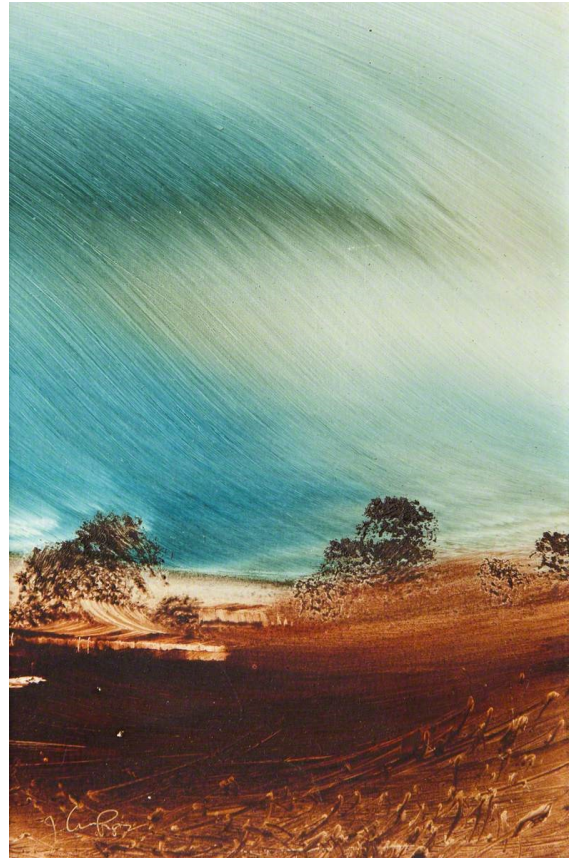
Briggate, Leeds John Atkinson Grimshaw 1891



Changes in Light Artist Research.



Sun and Rain over Regent Street, Bill Jacklin

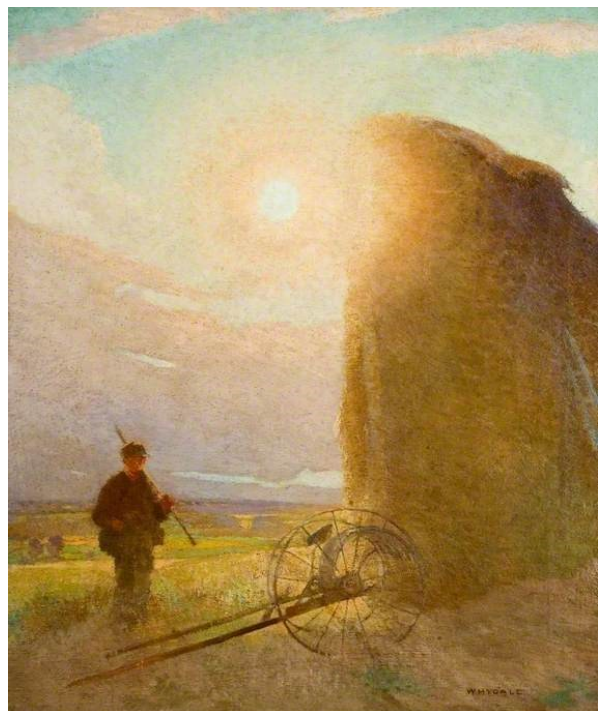


Summer Storm, unknown artist



The Storm Cloud, Op.LXIII, Hubert von Herkomer (1849–1914)

The Setting Sun, Ernest Herbert Whydale
(1886–1952)



Rainy Evening at Shinobazu Pond